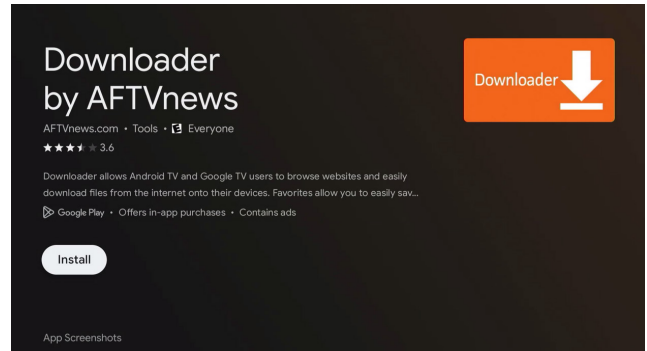
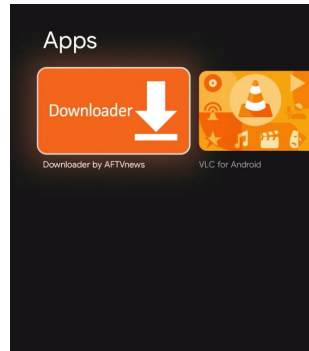
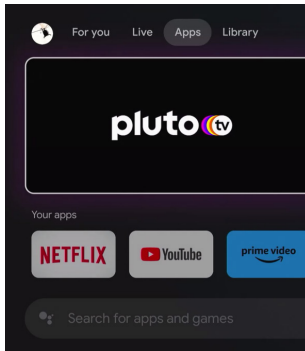


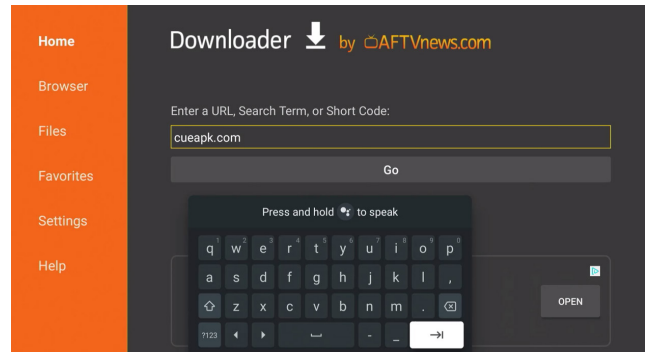
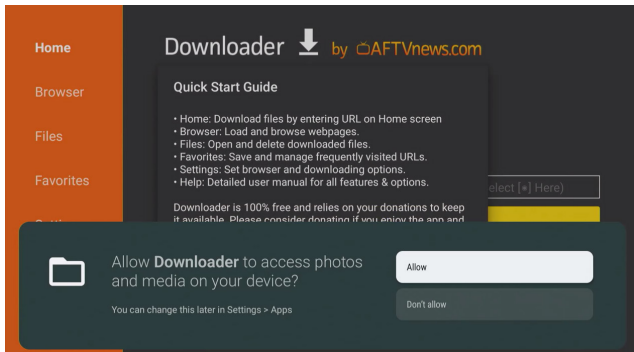
# How to Install the CUE App on Android Devices

Please follow the instructions below for installing our app on Chromecast or Onn devices.

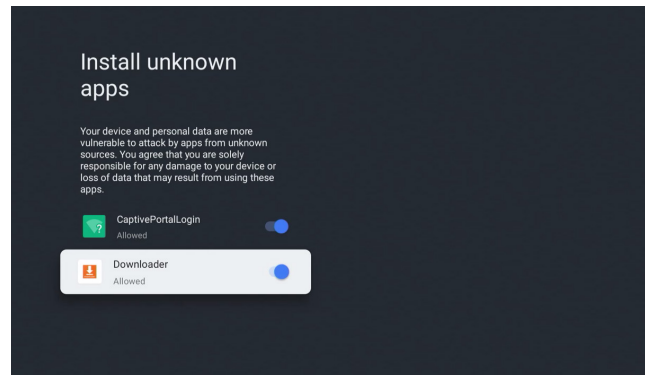
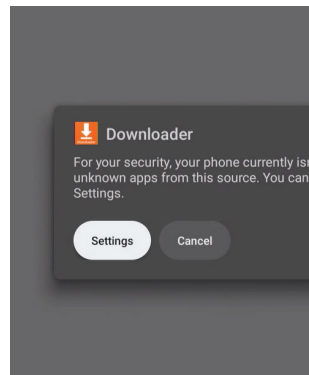
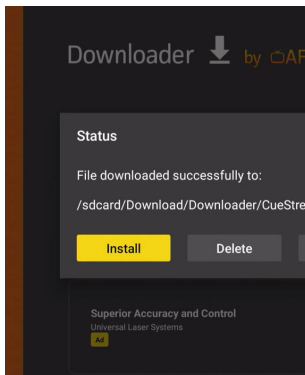
**NOTE: See page 4 for navigation details after installing.**



1. From the home screen, select the apps tab and in the search bar say or enter Downloader.
2. Install the Downloader app.

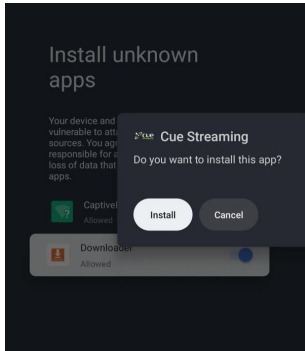


3. Once installed, open the Downloader app and when prompted select Allow.
4. In the Downloader search bar enter **cueapk.com** and click GO.

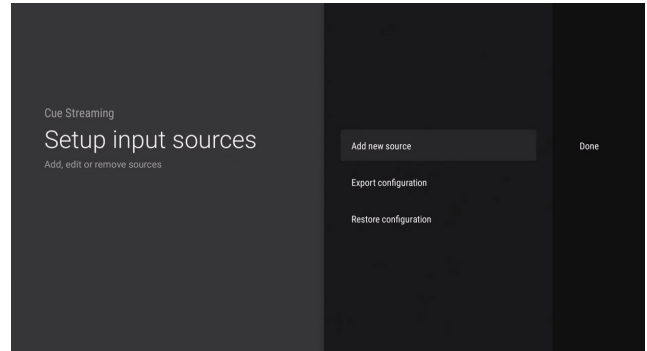
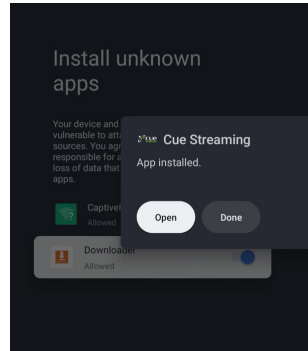


5. When the CUE app file is finished downloading click install and then a settings button will appear. Click on it and it will direct you to the install unknown apps section.
6. When the Install unknown apps screen appears make sure that Downloader is activated.

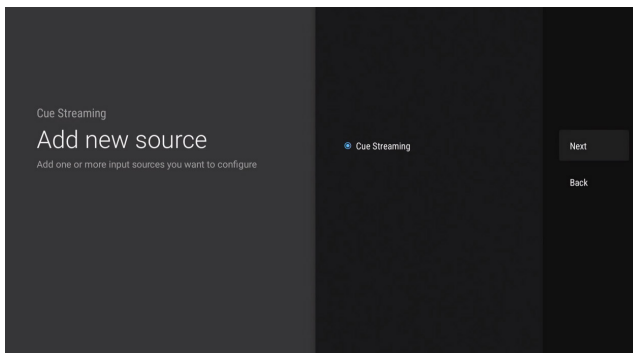
# How to Install the CUE App on Android Devices



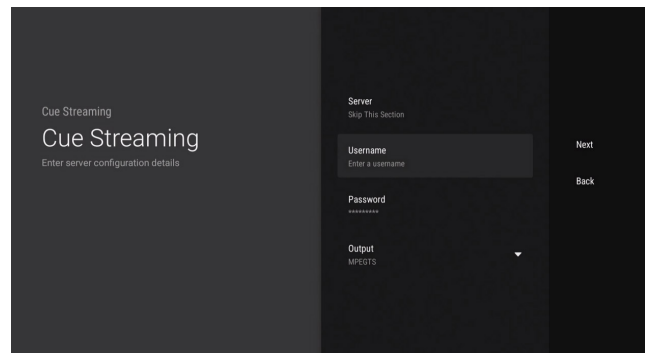
7. Click Install then click Open.



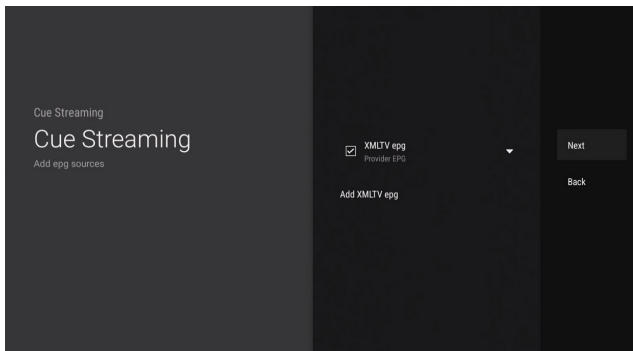
8. Click Add New Source.



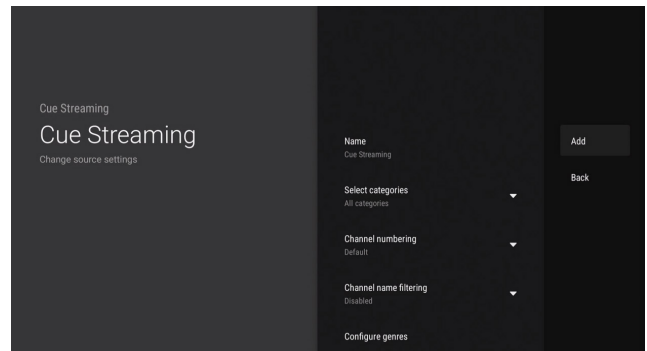
9. Select CUE Streaming and click Next.



10. Disregard the server and output and only enter your username and password and click Next.

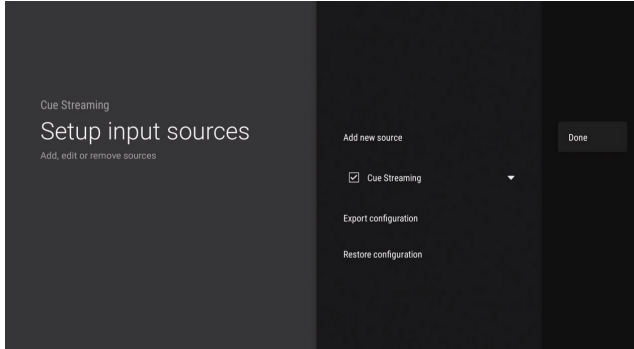


11. On the following screen the EPG will be preselected so just click Next.

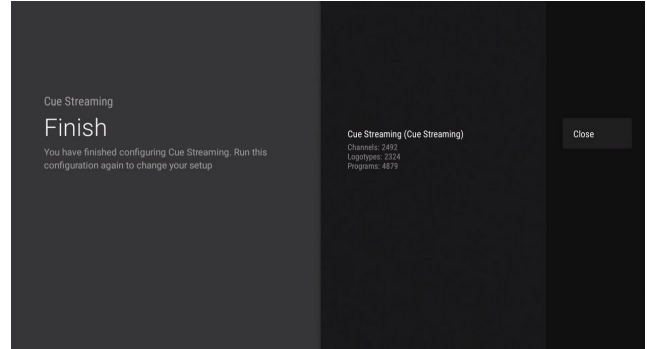


12. On the next screen you can select which categories you prefer or just leave it set as the default (The DVR feature is not active at this time so please disregard those options). When ready click Add.

# How to Install the CUE App on Android Devices



13. On the next screen the source CUE Streaming will be checked so just click Done.

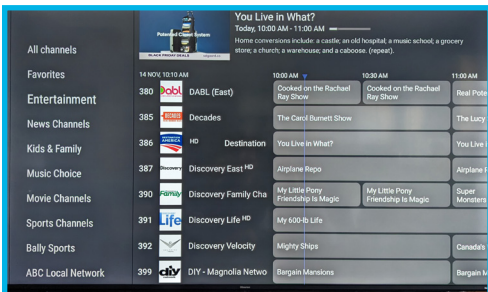


14. It may take a few minutes for the content to load, once the content is done loading click Close.

**Setup is complete. Thank you for choosing CUE Broadcast.**

If you need further assistance please feel free to contact our support team:  
**support@cuebroadcast.com**  
**855.569.1891**

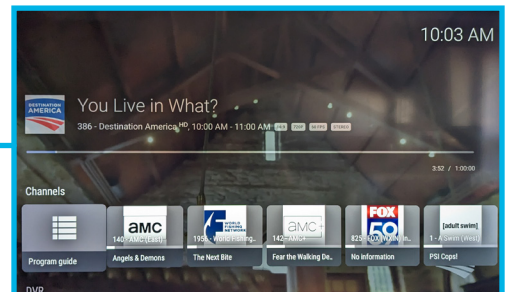
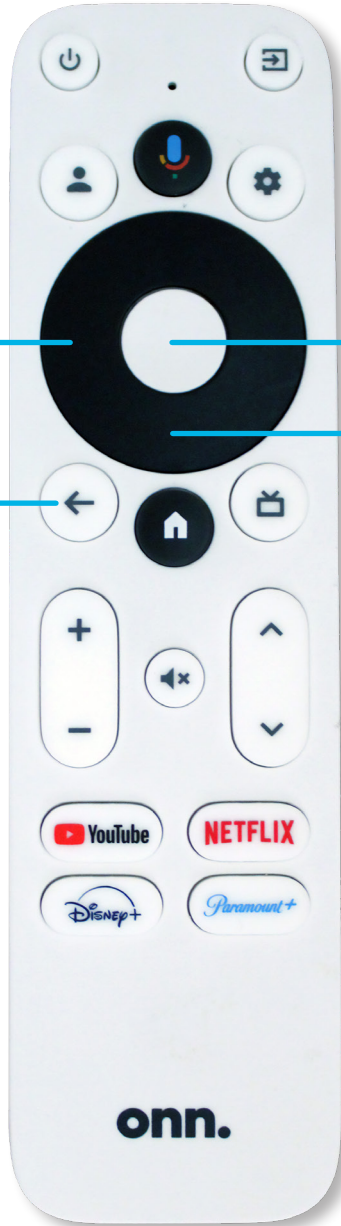
# How to Navigate CUE



When you are viewing the program guide press on the left side to access the various channel categories.



While viewing the channel guide or menus the back button will take you back to the last channel that was viewed. If pressed while watching live TV you will be directed out of the app.



The center select button will bring up the menu. Here you will find the channel guide, movies, TV series and settings. Use this to make all your selections.



While the menu is up, scroll down to access the other categories such as search, movies, series and settings.